



Quarry & Mining

- Quarry mapping
- 3D rock face profiling
- Blast analysis
- Stockpile surveys
- Mine surveys
- Volumetric surveys
- Stability monitoring
- Blast hole geometry surveys
- Cavity and void analysis
- Ore pass monitoring
- Limited & hazardous access surveys

Land

- Utilities surveys
- Highway surveys
- Cross country pipeline surveys
- Urban mapping
- Bridge surveys
- Topographic mapping
- Land fill surveys
- GIS data collection
- Cut & fill earthworks surveys
- Bridge clearance surveys



Marine

- River & canal surveys
- Coastal surveys
- Port and harbour surveys
- Dredging surveys
- Environment monitoring
- Flood plain mapping
- Land reclamation surveys

High Definition

- As-built surveys of oil and gas facilities
- Transport infrastructure surveys
- Heritage and architectural scanning
- Scan to BIM
- Industrial design and reverse engineering
- Brownfield updates and revamps
- Tunnel surveys



CUTTING EDGE LIDAR TECHNOLOGY, RESOURCES, AND SERVICES AT YOUR FINGERTIPS!

Technical Services is a division of Measurement Devices Ltd (MDL) which has been established to make state of the art laser measurement technology, services, and data accessible to everybody.

MDL offers the most comprehensive range of equipment hire, project support, and data services available in the market today.

Built on thirty years of experience, a large inventory of equipment, global service centres and skilled industry experts, MDL Technical Services is committed to offering a quality service for all stages of the project lifecycle.

Equipment Hire

Use the best for less. Choose from our large inventory of equipment available for hire worldwide.



Support Services

Our team of industry professionals with experience and knowledge can assist you with every stage of your project.

Data Processing

Our dedicated LiDAR data processing centre offers a wide range of quality services and deliverables.



Data Services

Access our extensive archive of data available for purchase online in various resolutions and formats.

EQUIPMENT HIRE

The following range of equipment is available for hire with or without a skilled operator. All equipment, accessories, and software are available globally and are supported through our network of branch offices and service centres. MDL maintains a fully serviced, large inventory of equipment which is available for long and short term hire at the most competitive rates on the market.

Mobile Scanning



Dynascan single head*



Dynascan dual head*



DynaCam

*Available in 150 metre and 500 metre range options

Mining Systems



Quarryman® Pro



Cavity Scanner (C-ALS®)



Void Scanner (VS150)



Boretrack®

HD Terrestrial Scanning



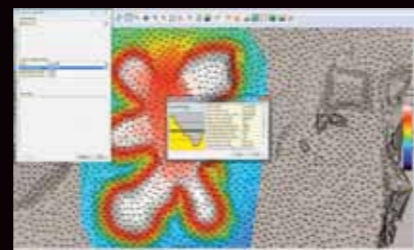
FARO Focus 3D

4D Survey Vessels



Combined sonar / LiDAR

Software & Accessories



GPS, Tripods, Targets and Software

SUPPORT SERVICES

As a designer and manufacturer of equipment MDL is in the best position to offer comprehensive technical support at every stage of the project lifecycle. Our team of experts are available worldwide to assist with project mobilisation, acquisition, and delivery for a wide range of applications. MDL also offer on-site training courses and in depth product/project specific consultancy services.

DATA PROCESSING

MDL's value added data processing service enables our customers to maximise the potential of survey data acquired without the need for significant capital investment in specialised software, resources, and training. Our team of professionals offer a wide a range of services with deliverables in industry standard CAD/GIS formats.

SERVICES

- Data cleaning & noise removal
- Bare earth & non ground classification
- Digital terrain models (DTM) & contouring
- Volumetric calculations
- Vectorisation & feature extraction
- Preparation of CAD drawings and GIS datasets
- 3D modelling & texturing
- Image overlay and point cloud colourisation
- Visualizations and flythroughs
- Change detection

BENEFITS

- ▲ **Latest technology** - Access to the latest equipment that is right for the job
- ▲ **Global service** - MDL is your local partner with offices and service centres across the world
- ▲ **Reduced overheads** - Reduce your capital investment in costly Hardware, Software, Resources, and Maintenance
- ▲ **Rapid scale up** - Quick staff and equipment augmentation for your project
- ▲ **Experience** - Access to some of the most experienced professionals in the industry
- ▲ **Expertise** - As the equipment manufacturer we are uniquely positioned to offer expert advice and support
- ▲ **Availability** - Our large inventory means you can get the equipment you want when you need it
- ▲ **Reliability** - Fully maintained and serviced equipment
- ▲ **Flexibility** - Long and short term rentals plus quick mobilisation times
- ▲ **Quality** - Three decades of experience providing quality products and services to various industries
- ▲ **Value** - Some of the most cost effective rental, service, and data offerings in the market

DATA SERVICES

MDL capture and maintain a large archive of 3D data for major transport routes and areas of interest across the UK and abroad. This data is available for purchase online in various formats and resolutions. If MDL do not have the data you require contact us and we can collect it for you with quick mobilisation times and rapid turnaround. For large organisations MDL can offer data archiving and management services to help maintain data and provide easy online access to multiple users.